

1

2

3

4

5

REVISION TABLE					
REV	ECN#	DESCRIPTION	REV BY	APPROVED	DATE
---	---	Original Drawing	OOG	MPW	9-20-17

A

B

C

D

A

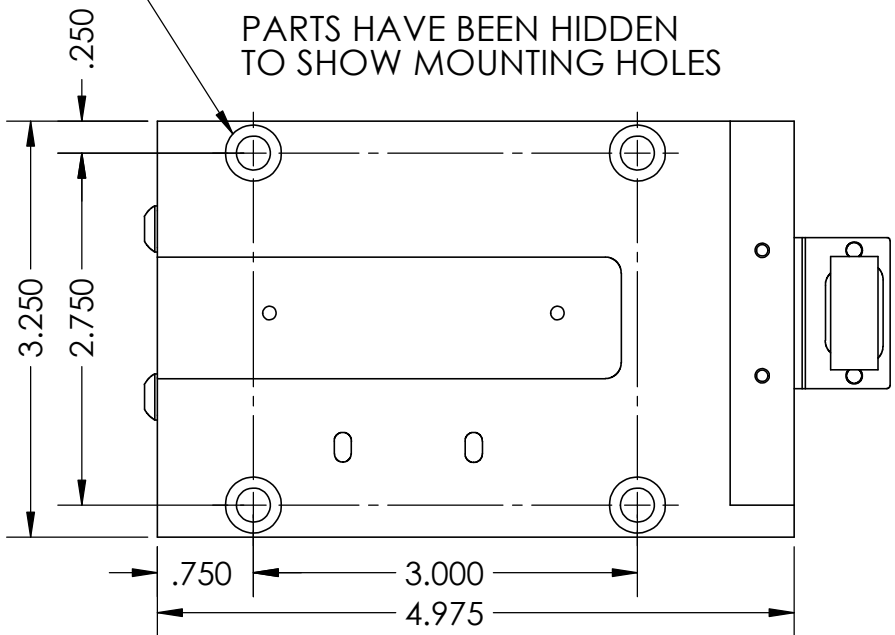
B

C

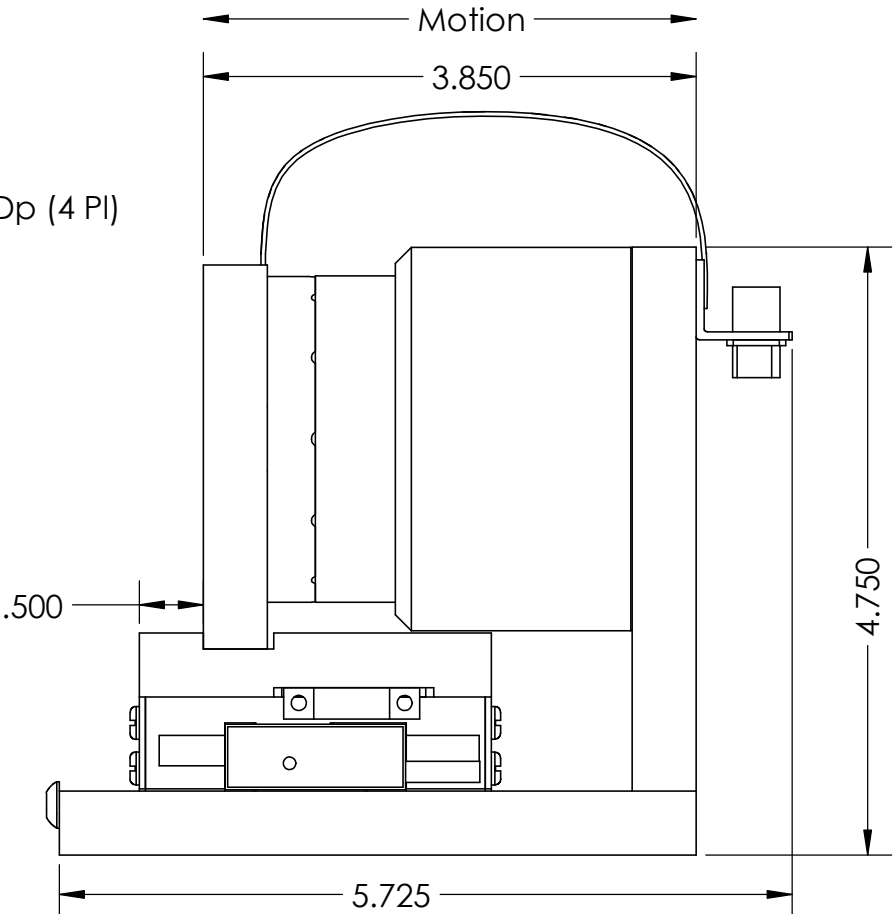
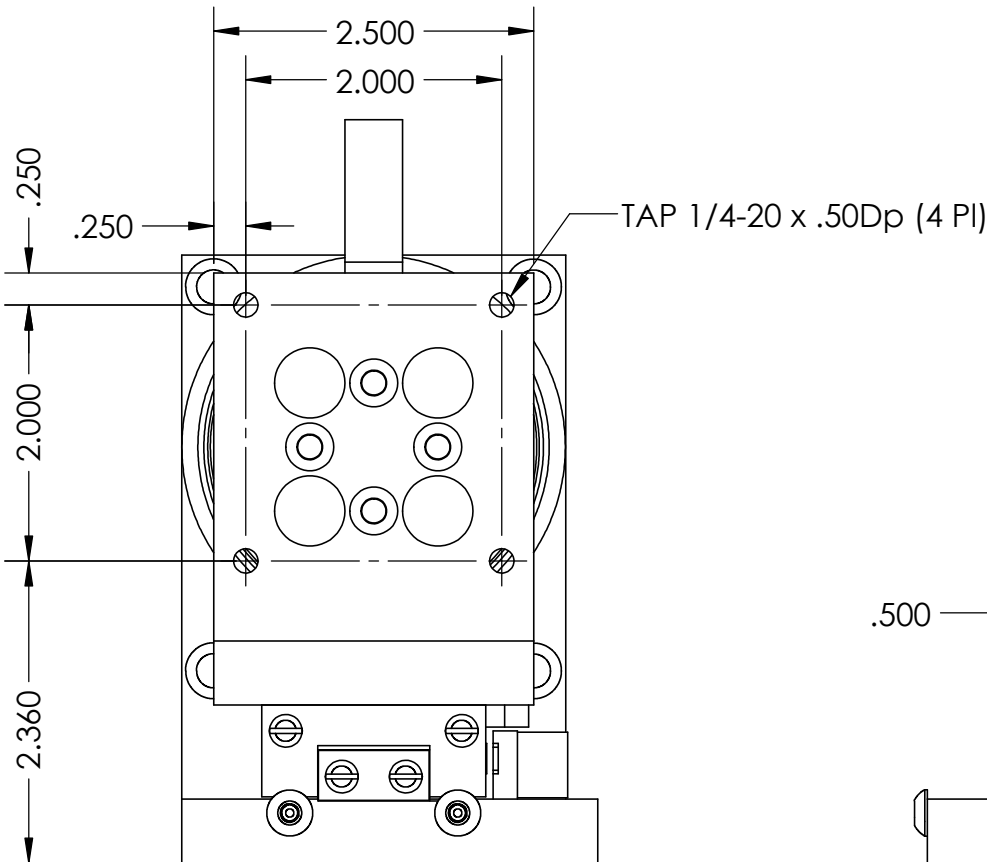
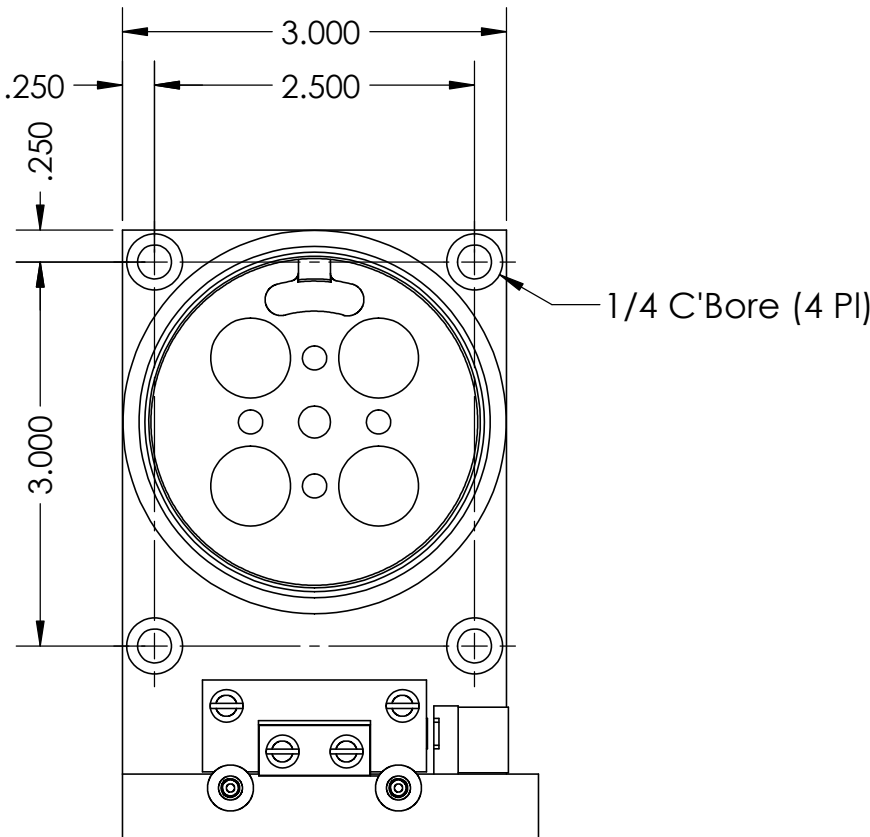
D

1/4 C'Bore (4 Pl)

PARTS HAVE BEEN HIDDEN  
TO SHOW MOUNTING HOLES



PARTS HAVE BEEN HIDDEN  
TO SHOW MOUNTING HOLES



1

2

3

4

5

A

A

Horizontal Configuration

Vertical Configuration

B

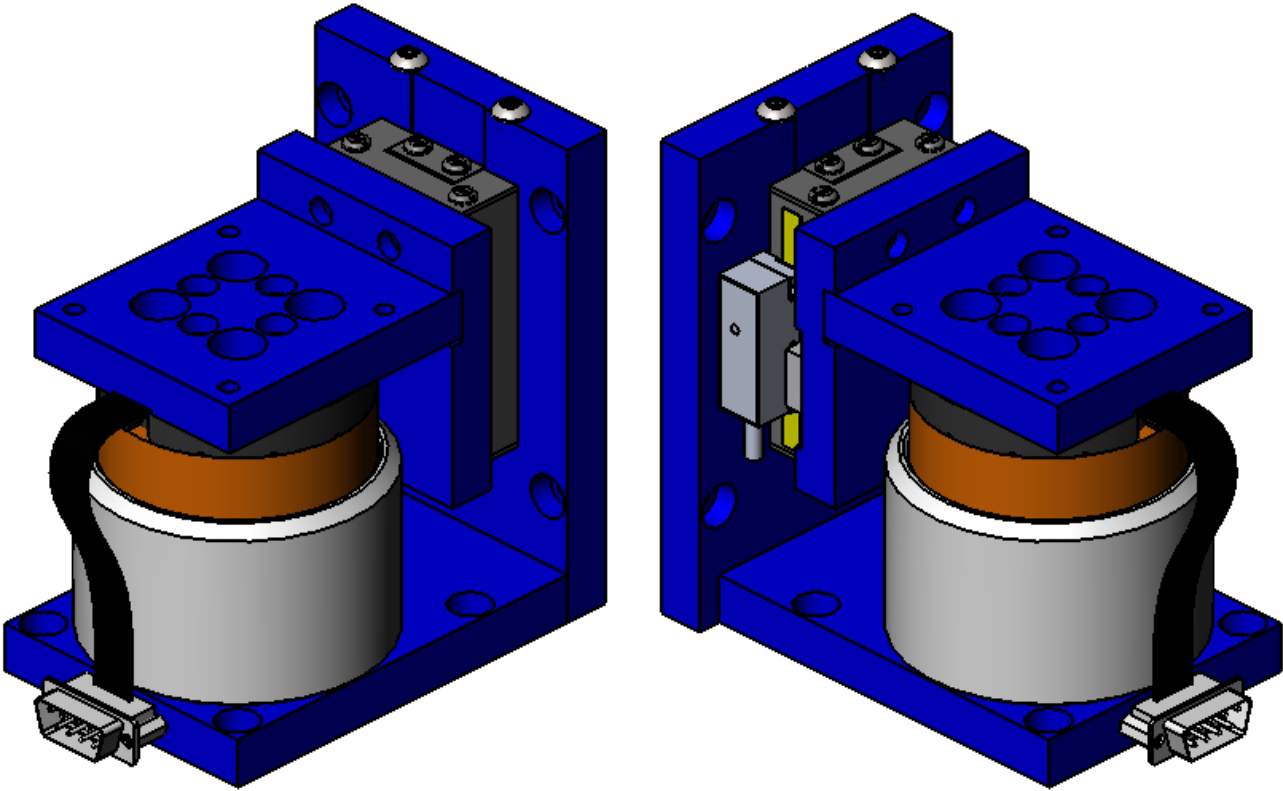
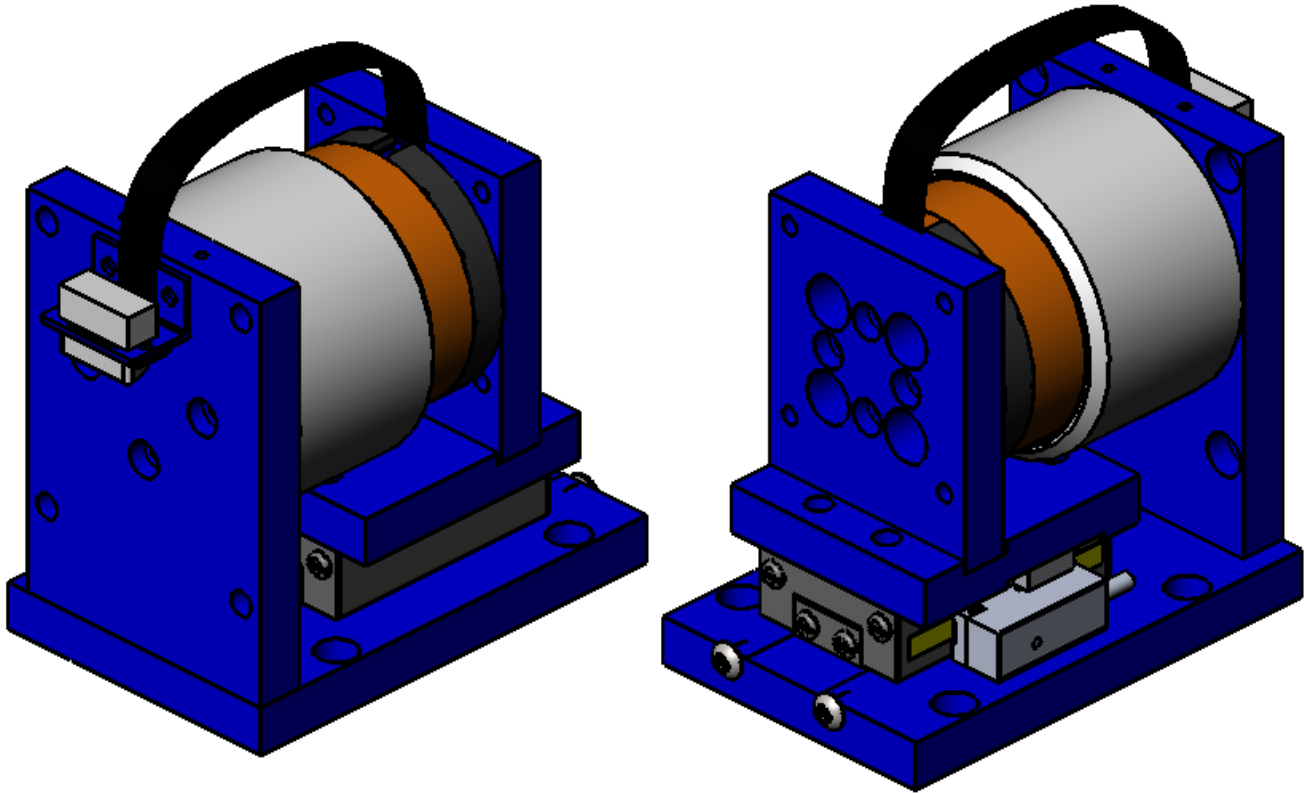
B

C

C

D

D



A

B

C

D

A

B

C

D

MOVING COIL NON-COMM ACTUATOR SPECIFICATIONS		
Motor P/N	NCC13-30-108-1H	
Stroke	1.25"	31.8 mm
Encoder Resolution	Sin/Cos	
Bearing Type	Crossed Roller	
Moving Mass	1.50 lbs	418 grams
Total Mass	6.0 lbs	2.0 Kg
Resistance @ 20C	4.8 ohms	
Inductance @ 20C	4.1 mH	
Electrical Time Constant	0.9 msec	
Motor Constant	2.3 LBS/SQRT(Watt)	7.6 N/SQRT(Watt)
Force Constant	5.0 LBS/Amp	22.3 N/Amp
Back EMF	0.5 V/ips	22.3 V/m/sec
Continuous Force	10.8 LBS	48 N
Max Power @ 100% Duty	23 Watts	
Peak Force	32.4 LBS	144 N
Max Power @ 10% Duty	200 Watts	

